



Denver International Airport PEÑA NEPA & DESIGN PROJECT

Scoping is Complete!

Denver International Airport (DEN) is evaluating potential improvements to the Peña corridor through the Peña NEPA & Design Project. The purpose of the project is to provide safe, reliable access for passengers, employees, and freight traveling to and from DEN. Improvements will help DEN continue to serve as a critical economic and transportation asset for Colorado and the region, while also supporting the mobility needs of surrounding communities.



WHAT IS SCOPING?

Scoping is an early step in the National Environmental Policy Act (NEPA) environmental review process. This is the step where the project team gathers input from the public, corridor users, agencies, and stakeholder organizations to better understand corridor needs, community priorities, potential issues, and ideas that would be considered as alternatives are developed and evaluated.

Scoping input does not select an alternative. Instead, it helps shape the project's purpose and need, the range of alternatives, evaluation criteria, and future technical and environmental analysis.

Scoping engagement

From **October 2025 through February 2026**, DEN conducted scoping outreach through surveys, open houses, and stakeholder interviews. Participation was substantial, reflecting broad public interest in the corridor's future.

Summary of Participation



WHO PARTICIPATED?

Participants represented a broad cross-section of corridor users and affected communities — including air travelers, airport employees, freight operators, neighbors adjacent to the airport, businesses, community organizations, advocacy groups, and elected officials — with some representation from outside Colorado.

Help shape the project!

Don't miss out on engagement opportunities by signing up for project updates.

Scan QR Code or go to flydenver.com/pena-nepa-design.



Have questions? Email the team at PenaPlan@flydenver.com.

What We Heard From Scoping

Scoping input helped inform the key corridor issues the project may need to address, including reliability, safety, airport access, local connectivity, travel options, and economic vitality.

Comments also helped explain how people experience the corridor today — where challenges occur, what concerns users most, and what types of improvements they believe could help.

Scoping input reinforced five core project needs that will help guide alternatives development and evaluation. Example comments are shown below to illustrate how public input connects to each project need.

Address safety concerns



“Congestion is significant and greatly impacts commute times. With only two lanes either way, on ramp merges are often unsafe and cause massive slowdowns.”

— Survey respondent

Provide reliable and efficient airport access



“Peña is undersized for the current amount of traffic. This leads to unpredictable travel times and stress being late to the airport for flights.”

— Survey respondent

Respond to growth in travel demand around DEN



“Increased airport traffic is of course contributing to the problem but the major issue is the urban sprawl that now depends on Peña. Figuring out how to separate airport and local traffic should be front and center to any solution.”

— Open house respondent

Enhance travel options



“I would be more inclined to take light rail if it was more reliable and didn't take so long to get from South Denver to DIA (including transfer at Union Station).”

— Survey respondent

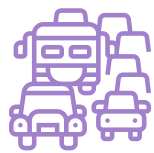
Strengthen economic vitality



“The Denver Airport is a massive contributor to the Denver economy... It is vital to have easy airport access.”

— Survey respondent

EIGHT KEY TAKEAWAYS



Roadway capacity and corridor operations

Public input showed strong concern about congestion and how the corridor functions today. Many participants supported alternatives that could add capacity, separate airport and local traffic, improve frontage or collector-distributor roads, and provide clearer signage.



Travel time reliability

Being able to plan around travel time was a major concern for passengers, employees, freight operators, and other corridor users. Participants emphasized that delays and uncertainty create challenges for travel to and from DEN.



I-70 interchange and major bottlenecks

The I-70/I-225/Chambers/Peña area was frequently identified as a key problem location. Common concerns included weaving, short merge areas, confusing signage, delays, and crash risk.



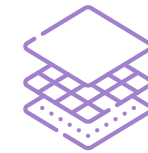
Transit access and travel options

Participants expressed strong interest in better transit as an alternative to driving. Common suggestions included more frequent A-Line service, longer service hours, improved capacity, better station access, and lower fares.



Safety concerns

Safety was a recurring theme across all types of input. Participants identified concerns related to interchange design, wayfinding, driver behavior, narrow shoulders, visibility, and gaps in walking and biking connections.



Changing land use and travel patterns

Participants noted that the corridor now serves more than airport trips alone. Growth in Green Valley Ranch, Montbello, Aurora Highlands, Commerce City, and nearby areas is increasing local and regional travel demand.



Access for workers and corridor users

Reliable and affordable access to DEN-area jobs was a major concern. Participants highlighted challenges for employees traveling early in the morning, late at night, or during nontraditional shift times.



Transparency and responsiveness in engagement

Participants asked for clear, focused engagement tied to decision-making. Many wanted to understand how public input will be considered as the project moves forward.



How Scoping is Informing Next Steps

The feedback collected during scoping is helping DEN understand corridor needs, compare alternatives, focus technical and environmental review, and plan future engagement. Here are some of the ways public input is helping shape the project's next steps.



CONFIRMED THE PROJECT PURPOSE AND NEED

Scoping input helped confirm the project's core needs: reliable and efficient airport access, safety, travel options, and responding to local travel demand from nearby communities. Public input is an important source of information. It adds real-world experience to technical data by showing how people use the Peña corridor, where travel feels unreliable or unsafe, and how airport, local, employee, freight, and transit trips interact.



CLARIFIED THE RANGE OF ALTERNATIVES

Participants shared specific ideas, including adding roadway capacity, improving transit capacity and service, fixing operational issues related to merging and weaving, improving interchanges, and separating airport and local travel streams.



SUPPORTS ALTERNATIVES EVALUATION

Scoping input is helping DEN compare how well each alternative responds to corridor needs and public priorities. Participants identified outcomes they want alternatives to address, including safety, reliability, access, travel choices, and the needs of different users. They also emphasized practical, cost-effective, and near-term solutions, along with technical and funding feasibility.



INFORMS ONGOING PUBLIC ENGAGEMENT

Input is informing how DEN continues to engage the public as the project moves forward. Engagement is especially important now as DEN develops and refines alternatives, which is the heart of the NEPA process. DEN will participate in community events throughout the summer, along with briefings, focused conversations, and other opportunities to meet people where they are. Look for a calendar of upcoming events on the project website.



FOCUSES THE TECHNICAL AND ENVIRONMENTAL REVIEW

Input is helping guide the technical and environmental review, which will be a major priority for 2027. This review helps incorporate environmental considerations into alternatives evaluation and will be conducted in greater detail for the preferred alternative. Comments about community impacts, environmental effects, sustainability, resiliency, and traffic conflicts are helping identify the issues, locations, and potential effects to be analyzed.

Thank you to everyone who took time to participate!

DEN is committed to listening, being transparent, and planning for a Peña corridor that works for the people that rely on it today and into the future.

